



# Rush Darter Fish Passage

Turkey Creek Nature Preserve





May, 2018: New Rush  
Darter (*Etheostoma  
phytophilum*) population  
found in unnamed  
tributary to Turkey  
Creek during Spring  
Bioblitz by Dr. Kuhajda





# Problem

Two culverts concrete pipe culverts in unnamed tributary at Turkey Creek Road are undersized and could restrict upstream migration during high flow.



Upstream



Downstream

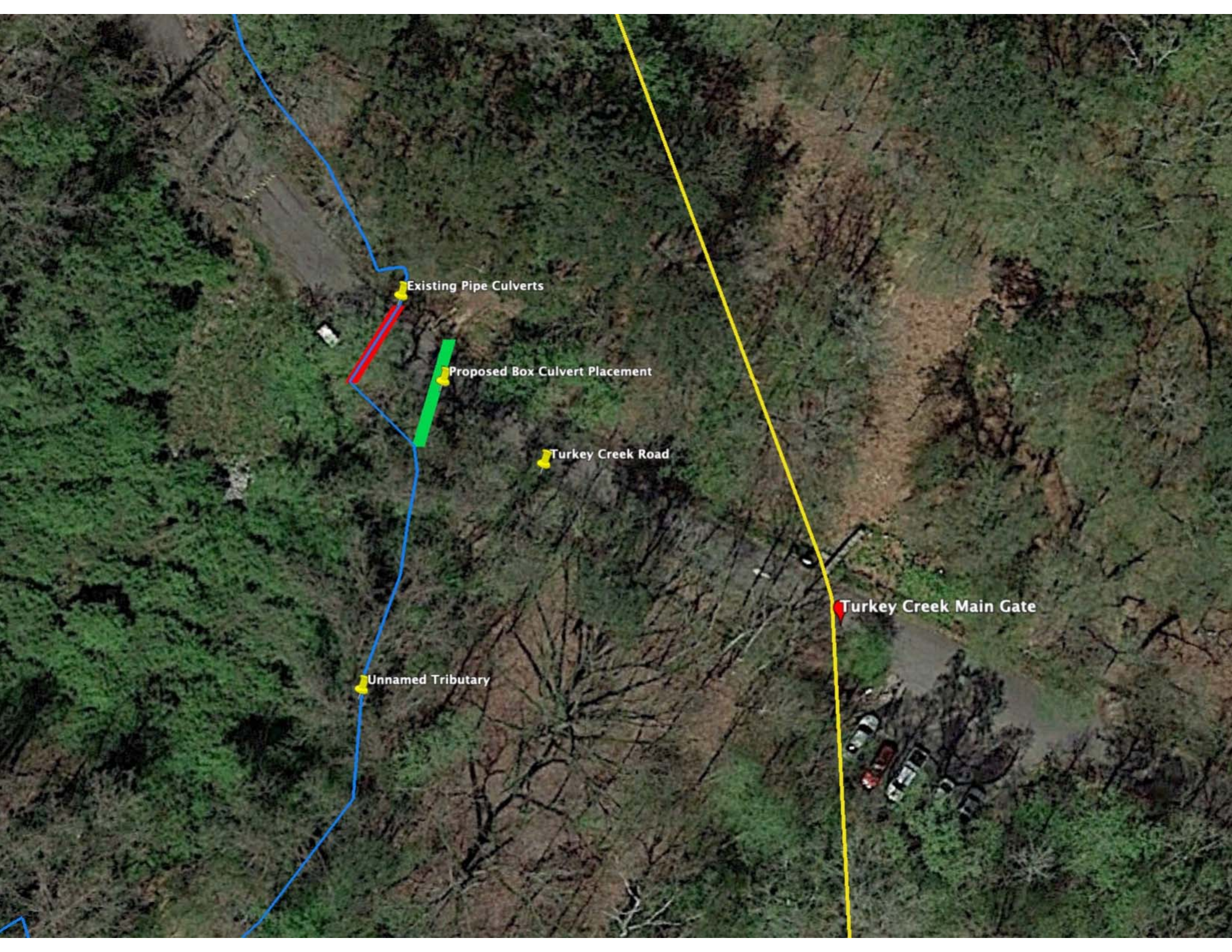


# Solution

- ❖ Replace existing round culverts with larger box culvert
- ❖ Shift culvert location to return natural hydrologic flow to tributary
- ❖ Set culvert bottom below grade to ensure flow







Existing Pipe Culverts

Proposed Box Culvert Placement

Turkey Creek Road

Unnamed Tributary

Turkey Creek Main Gate



# Partner Support

- ❖ Engineering Costs - The Nature Conservancy
- ❖ Culvert Construction/Permitting - USFW, Fish Passage
- ❖ Site work/Implementation - Bob Rast, Rast Construction Inc. (donated)
- ❖ Paving/Additional Materials - The Freshwater Land Trust, Mohammed bid Zayed Species Conservation Fund, Conservation International