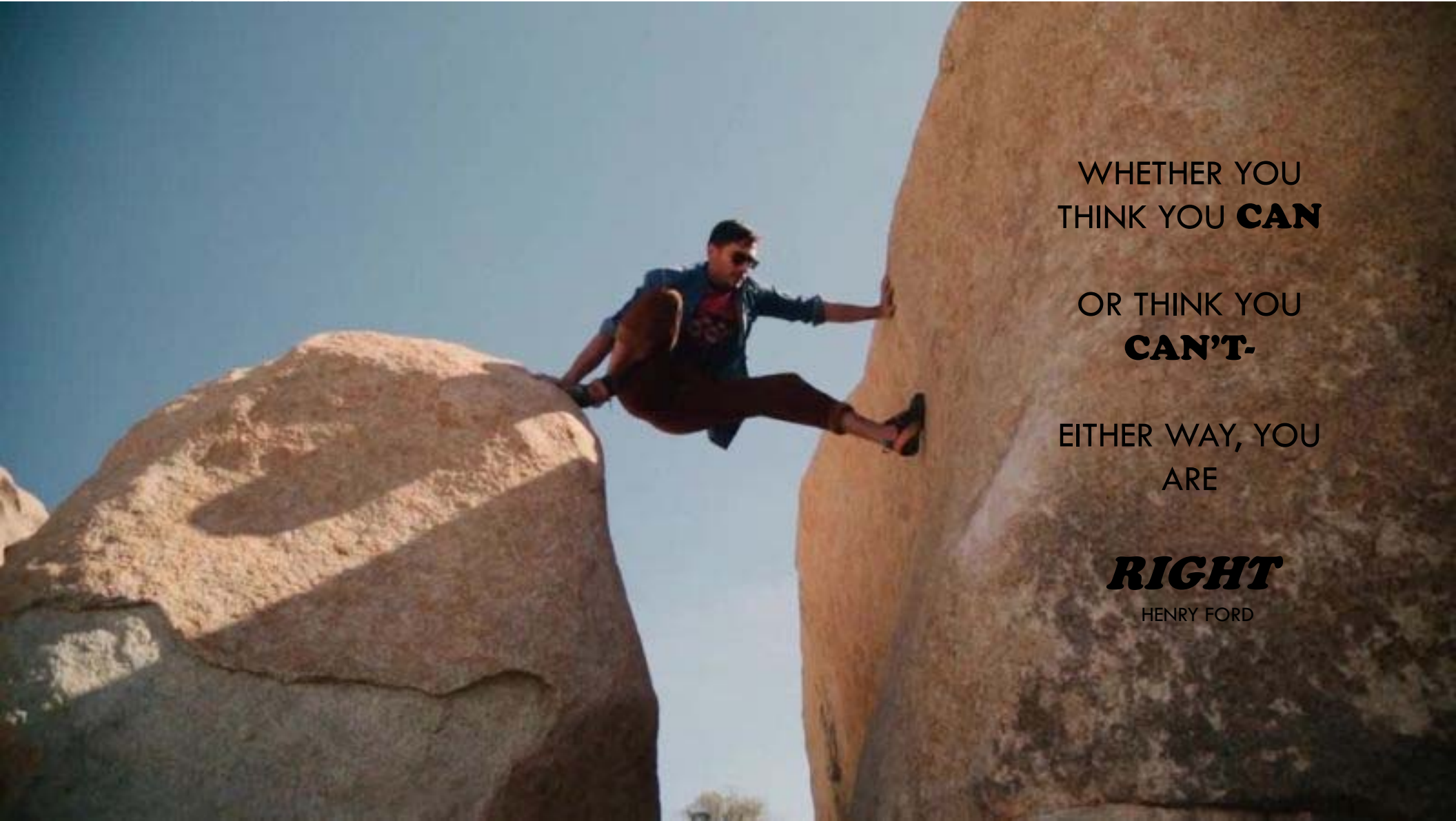
The background is a solid light blue color. It is decorated with numerous white bubbles of various sizes. Some bubbles are simple outlines, while others have a white highlight inside, giving them a 3D appearance. They are scattered across the slide, with a higher concentration in the top left and bottom right corners.

ALABAMA ASSOCIATION OF RC&D COUNCILS 2019 ANNUAL MEETING

COUNCIL PROJECTS FROM THE STATE OF ALABAMA



WHETHER YOU
THINK YOU **CAN**

OR THINK YOU
CAN'T-

EITHER WAY, YOU
ARE

RIGHT

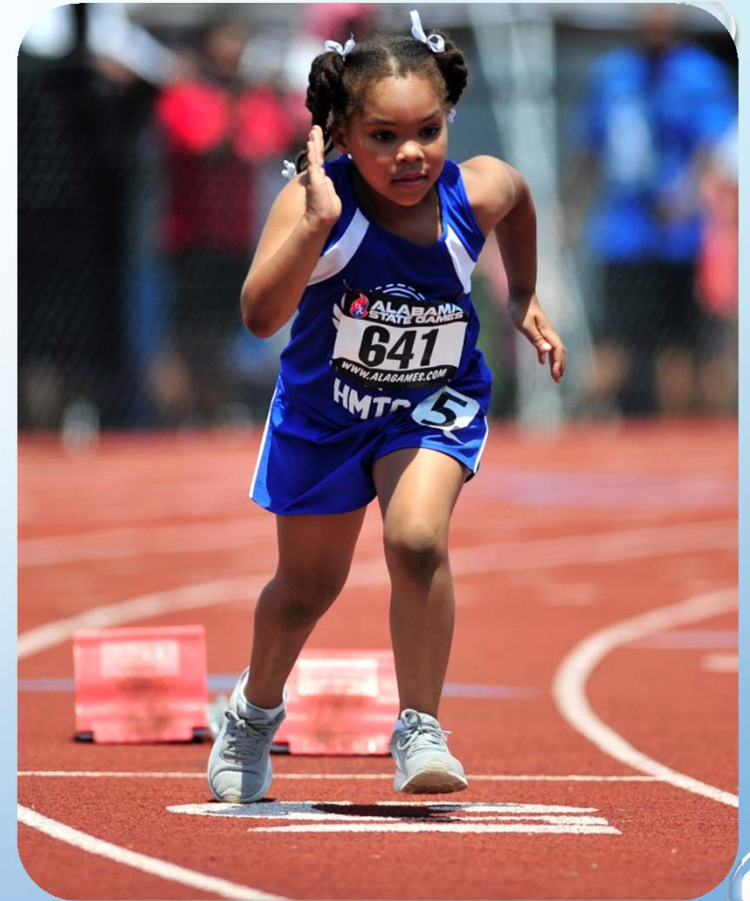
HENRY FORD



STATE-WIDE GRANT

ALABAMA STATE GAMES AND OPENING CEREMONIES

- THE ALABAMA STATE GAMES PROMOTE HEALTH, FITNESS AND CHARACTER BUILDING THROUGH MULTI-SPORT COMPETITIONS AND PHYSICAL ACTIVITY. THE STATE GAMES PROVIDE A MOTIVATIONAL GOAL FOR ALL ATHLETES WITHIN THE STATE.





STATE-WIDE GRANT

LEGACY ENVIRONMENTAL EDUCATION WORKSHOP

- BROUGHT ALABAMA EDUCATORS INTO THE FIELD TO LEARN HANDS-ON TECHNIQUES TO INTEGRATE ENVIRONMENTAL EDUCATION INTO THE CLASSROOM.





STATE-WIDE GRANT

BUCKMASTERS LIFE HUNT

- A GRANTING SERVICE FOR CHILDREN AND YOUNG ADULTS WITH CRITICAL ILLNESS. THOSE AWARDED LIFE HUNT GRANTS SPEND THREE DAYS HUNTING IN ALABAMA WITH THE BUCK MASTERS DEER FOUNDATION



A photograph of a dense forest with large, gnarled trees and a path leading into the distance. The trees have thick, twisted trunks and are covered in moss. The path is a narrow dirt road that curves slightly to the right. The lighting is soft and dappled, with sunlight filtering through the canopy. The overall tone is warm and somewhat somber.

We can only see a SHORT distance ahead,
but we can see

PLENTY

there that needs to be done.



STATE-WIDE GRANT

SUPER CITIZENS PROGRAM

- A TEN-WEEK PROGRAM FOR STUDENTS IN GRADES 1-5. LESSONS TEACH GOOD CITIZENSHIP THROUGH CHARACTER TRAITS SUCH AS COURAGE, COMMITMENT, LOYALTY, RESPONSIBILITY, HONOR, RESPECT, COMPASSION AND PATRIOTISM





ALA-TOM

ART HOUSE ENRICHMENT PROGRAM

EDUCATING THE BLACK BELT REGIONS ADULTS AND
YOUTH. INCLUDES IN-SCHOOL ENRICHMENT
PROGRAMS, AFTER SCHOOL PROGRAMS, ARTIST
DEMONSTRATIONS, FESTIVALS AND ADULT CLASSES.

PICTURED: BLACK BELT TREASURES ART CLASS





ALA-TOM

FAWN-FORESTRY AWARENESS WEEK NOW

AN EDUCATIONAL PROGRAM ESTABLISHED AS AN
OUTDOOR CLASSROOM FOR ALL SIXTH GRADERS IN
CLARKE COUNTY.



SUCCESS



**WHAT PEOPLE THINK
IT LOOKS LIKE**

SUCCESS



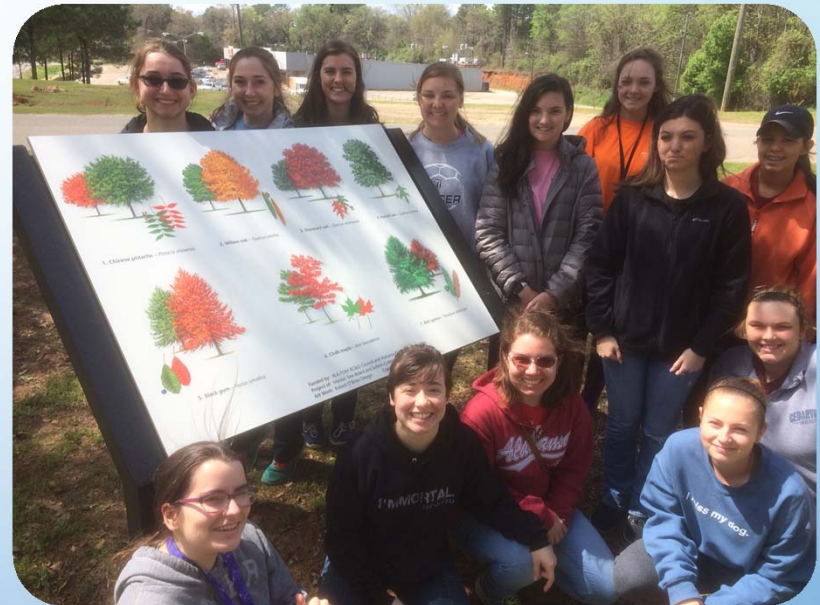
**WHAT IT REALLY
LOOKS LIKE**



ALA-TOM

MARION WALKING TRAIL SIGNAGE

DESIGN AND PURCHASE OF AN INTERPRETIVE TREES
CAPE SIGN. PAINTING OF TREES, LEAVES, AND FRUIT
OF 8 SPECIES OF TREES WITH COMMON SCIENTIFIC
NAMES





ALA-TOM

SELMA YOUTH LEADERSHIP

- A MULTI-CULTURAL PROGRAM DESIGNED TO ASSIST YOUTH IN DEVELOPING STRONG, EFFECTIVE LEADERSHIP SKILLS FOR DIVERSE COMMUNITY SETTINGS.






ALA-TOM

REGIONAL ROBOTICS COMPETITION

- GRANT FUNDS PURCHASED MATERIALS IN THE KITS PROVIDED TO TEAMS TO BUILD ROBOTS FOR REGIONAL COMPETITION.



A detailed illustration of a large, dark, metallic-looking beetle with a shiny, segmented shell. The beetle is positioned on a dark, textured surface, possibly a log or a rock, and is pushing a small, realistic globe of the Earth with its front legs. The globe shows blue oceans and brown landmasses. The background is a soft-focus green, suggesting foliage. The text is written in a white, handwritten-style font over the right side of the globe.

The secret to
success is to
focus on
Goals, Not
Obstacles



ALA-TOM

ECI GREENHOUSE PROJECT

- EDUCATE CLIENTS, COMMUNITY MEMBERS, AND STUDENTS ABOUT AGRICULTURE, FOOD SAFETY, HEALTH, AND NUTRITION ENTREPRENEURSHIP.





ALA-TOM

SABRA CHARITY EVENT

- SABRA SANCTUARY, INC., PROVIDES SERVICES TO VICTIMS OF DOMESTIC VIOLENCE. SABRA HOLDS AN ANNUAL CHARITY EVENT WHICH INCLUDES DINNER AND A SILENT AUCTION. THIS SPONSORSHIP ENABLED SABRA TO PROVIDE THIS EVENT WITHOUT OVERHEAD EXPENSES AND THEREFORE ALL FUNDS RAISED WILL DIRECTLY BENEFIT THE VICTIMS OF DOMESTIC VIOLENCE.





ALA-TOM

WE CONNECT

- A CURRICULUM PROGRAM DESIGNED TO EMPOWER AT-RISK YOUTH BY EDUCATING THEM ON A VARIETY OF TOPICS.



"All that we
are is the
result of what
we have
thought."

Buddha





ALA-TOM

HIPPY CONECUH

- HIPPY IS A NATIONALLY RECOGNIZED HOME-BASED PARENT INVOLVEMENT SCHOOL READINESS PROGRAM WHICH SENDS TRAINED, HOME VISITORS, INTO THE HOME TO WORK WITH THE PARENTS OF CHILDREN 3,4, AND 5.





YOUTH CORP

- AN ENVIRONMENTAL, LEADERSHIP, CONSERVATION AWARENESS CAMP THAT LASTS 3.5 DAYS;
- DEVELOPS LEADERSHIP SKILLS, ENVIRONMENTAL RESPONSIBILITY, CONSERVATION AND COMMUNITY INVOLVEMENT






AMRV RC&D

SENATOR ORR VISITS AMRV

- WATERWORKS CENTER FOR ENVIRONMENTAL EDUCATION IS THE NATION'S ONLY WATER-TREATMENT PLANT REOPENED AS A GREEN LEARNING CENTER FOR CHILDREN AND ADULTS





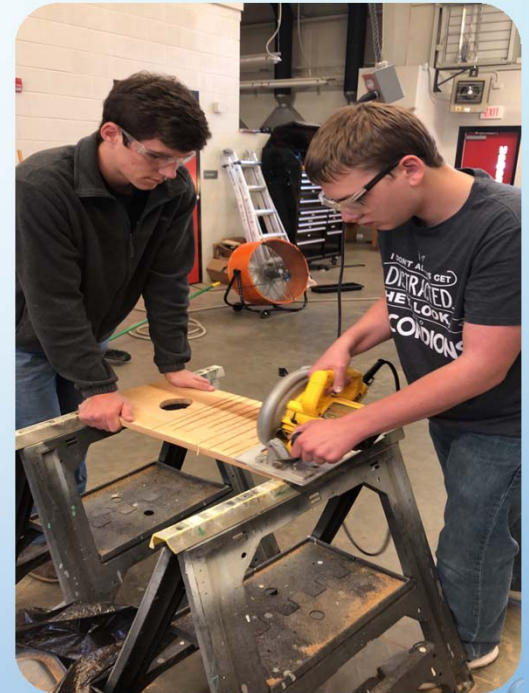
"Imagination is everything. It is the preview of life's coming attractions."

Albert Einstein



PISGAH DUCK BOXES

- PISGAH HIGH SCHOOL STUDENTS MADE DUCK BOXES FOR THE LITTLE RIVER CANYON AREA





AMRV RC&D

FIVE LOAVES

- WE RESCUED 5,000 BOXES OF FOOD FROM SURPLUS PROPERTY. EACH BOX HAD FOOD FOR 12 PEOPLE. THANKS TO THE RC&D NETWORK, BOARD MEMBERS AND PARTNERS ALL THE FOOD WAS PICKED UP AND DELIVERED TO NEEDY FAMILIES ACROSS NORTH ALABAMA





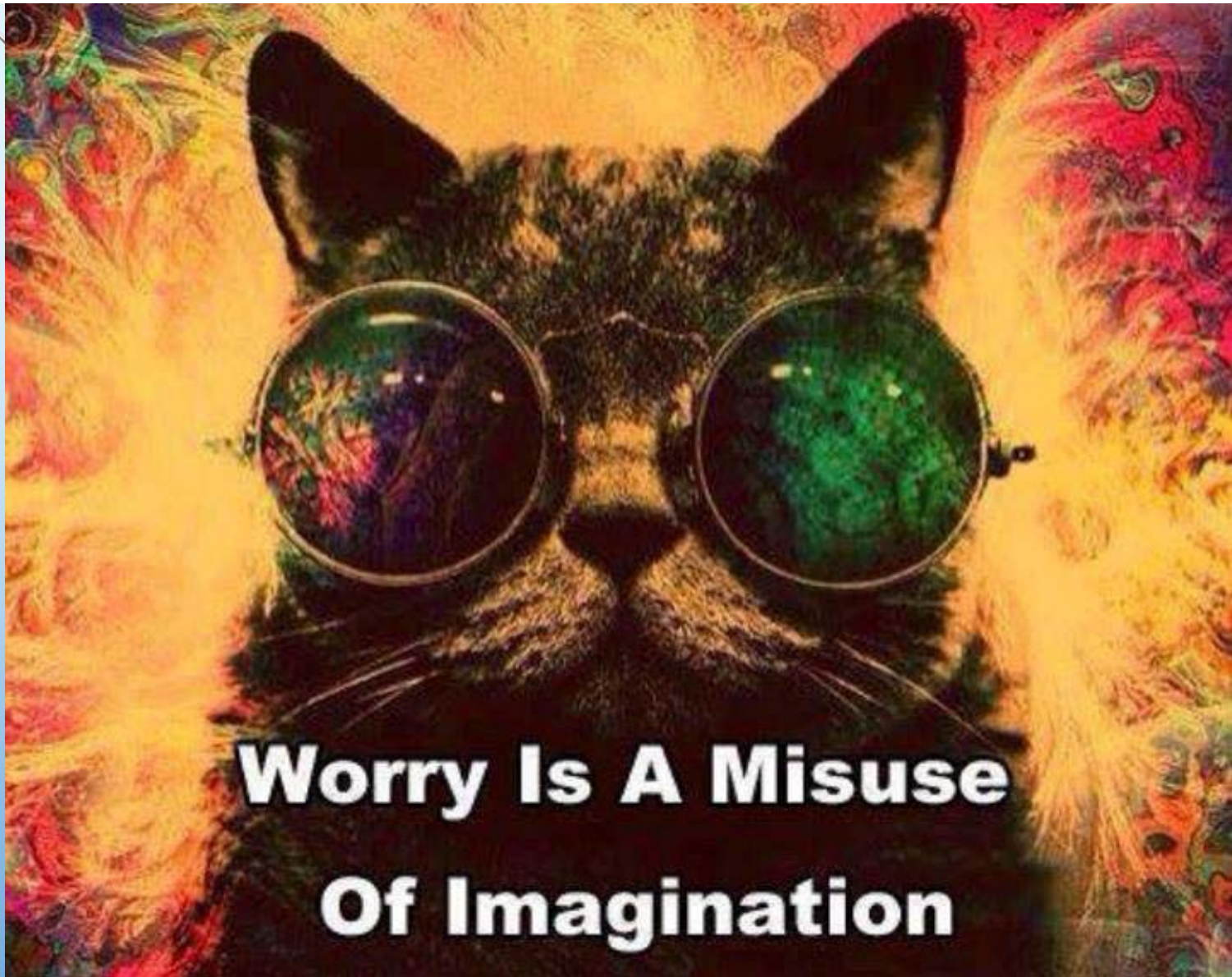
AMRV RC&D

CLOTHE OUR KIDS

- SUPPLY STUDENTS IN NEED WITH CLOTHES.

PICTURED: STUDENTS SORT DONATED CLOTHING





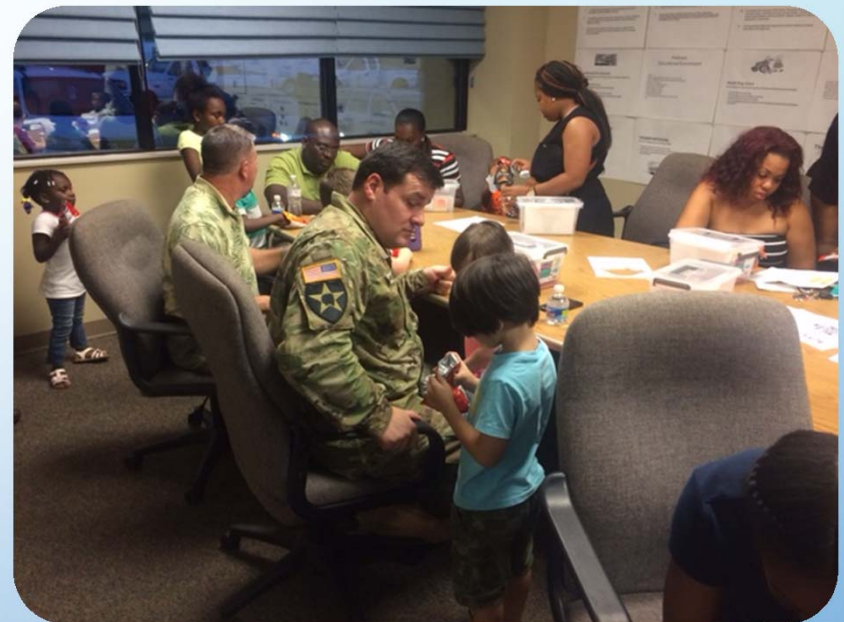
**Worry Is A Misuse
Of Imagination**



AMRV RC&D

PARENT-CHILD READING PROGRAM

- EMPOWERS PARENTS AS THEIR CHILDREN'S FIRST TEACHER BY GIVING THEM THE TOOLS, SKILLS AND CONFIDENCE THEY NEED TO WORK WITH THEIR CHILDREN IN THE HOME. THE PROGRAM WAS DESIGNED TO BRING FAMILIES, ORGANIZATIONS AND COMMUNITIES TOGETHER AND REMOVE ANY BARRIERS TO PARTICIPATION THAT MAY INCLUDE LIMITED FINANCIAL RESOURCES OR LACK OF EDUCATION.





AMRV RC&D

KING'S MEMORIAL PRESCHOOL GARDEN

- PRESCHOOLERS LEARN WHERE FOOD COMES FROM



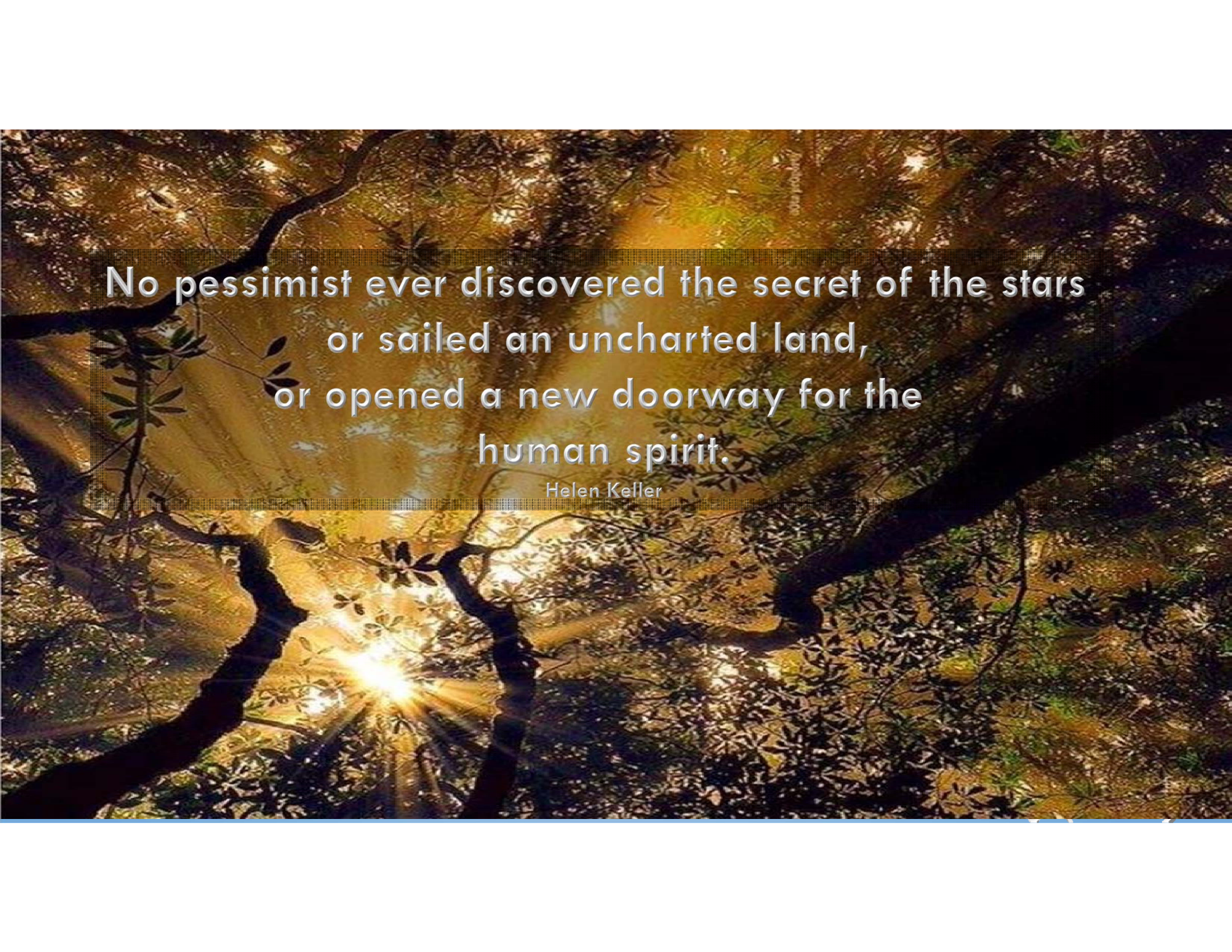


AMRV RC&D

ARDMORE NATURALIST

- THE PROGRAM FOCUSES ON THE NATURAL WORLD OF ALABAMA WHILE EXPLORING ITS GEOGRAPHY, GEOLOGY AND ECOLOGY. PARTICIPANTS EXPAND CREATIVITY, DEVELOP A POSITIVE CONSERVATION ETHIC AND HONE OUTDOOR SKILLS WHILE GAINING HANDS-ON EXPERIENCE WITH NATURE, CONSERVATION AND ART





No pessimist ever discovered the secret of the stars
or sailed an uncharted land,
or opened a new doorway for the
human spirit.

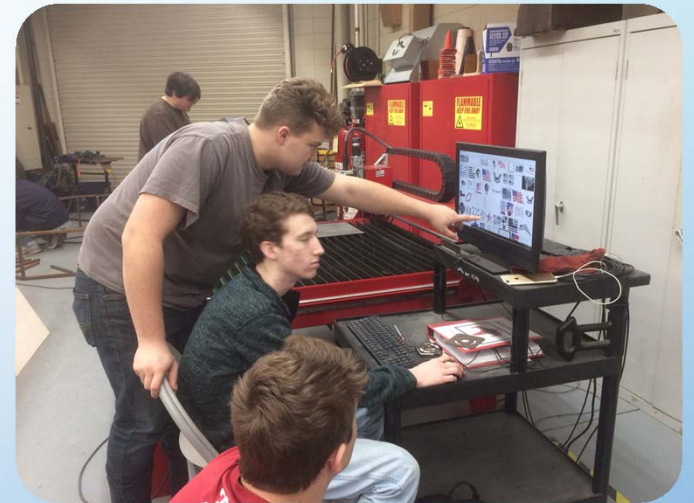
Helen Keller



AMRV RC&D

GUNTERSVILLE AG SCIENCE

- UPDATED WELDING SHOP WITH A PLASMA CUTTER AND OTHER EQUIPMENT



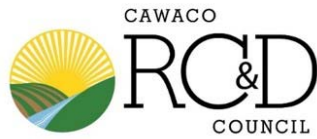


CAWACO RC&D

CONSERVATION EDUCATION

- PROVIDED CONSERVATION AND NATURAL RESOURCE EDUCATION OPPORTUNITIES AND WORKSHOPS, INCLUDING LAND JUDGING, FORESTRY, SCHOOL OUTREACH AND WILDLIFE SCHOOL.





CAWACO RC&D

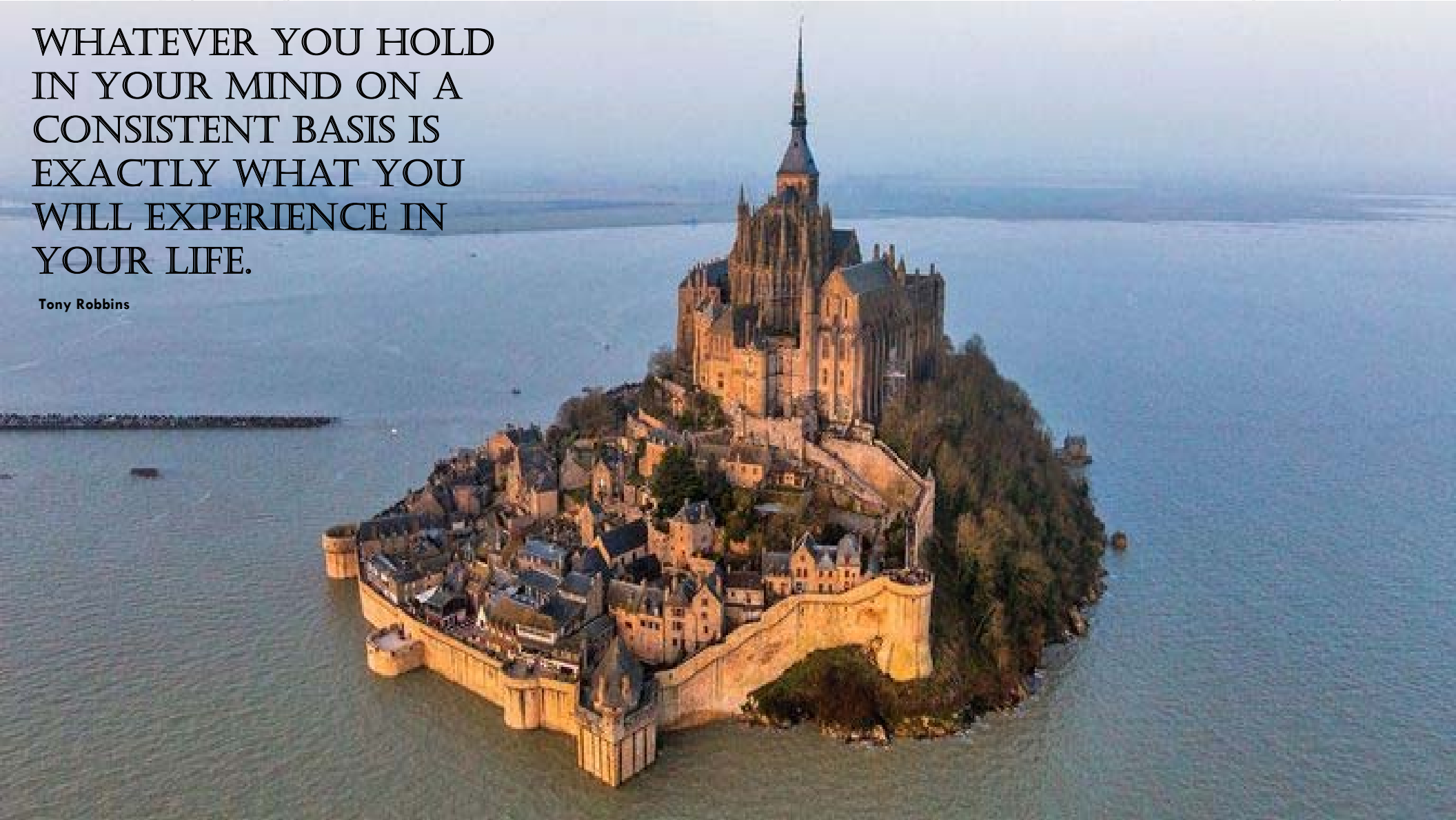
RC&D GROWS GARDENS

- CAWACO ASSISTED THE SCOTTS' COMPANY IN DISTRIBUTING OVER 22,134 BAGS OF SOIL TO COMMUNITY AND SCHOOL GARDENS ACROSS THE STATE. THE VALUE OF SCOTTS' DONATION IS ESTIMATED AT OVER \$207,000.00
- PICTURED: BESSEMER HIGH SCHOOL STUDENTS



WHATEVER YOU HOLD
IN YOUR MIND ON A
CONSISTENT BASIS IS
EXACTLY WHAT YOU
WILL EXPERIENCE IN
YOUR LIFE.

Tony Robbins



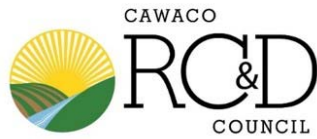


CAWACO RC&D

EVERY KID AT RED MOUNTAIN PARK

- 350 INNER-CITY CHILDREN WERE PROVIDED WITH SCHOLARSHIPS TO ATTEND FIELD TRIPS TO RED MOUNTAIN PARK. STUDENTS LEARN HISTORY, ENVIRONMENTAL CONSERVATION, AND PARTICIPATE IN TEAM-BUILDING ACTIVITIES.



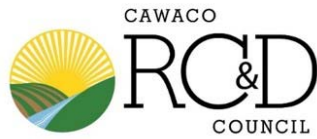


CAWACO RC&D

TOOLS FOR TRAILS

- IN 2018, 308 VOLUNTEERS LOGGED 30,200 HOURS MAINTAINING OR DEVELOPING OVER 70,000 FEET OF TRAILS ALL OVER CENTRAL ALABAMA.

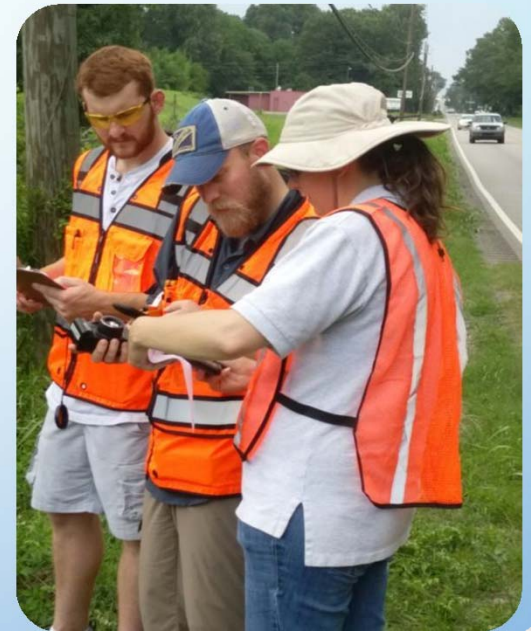




CAWACO RC&D

SUPPORT OF ALABAMA RIVERS AND STREAMS NETWORK

- THE NETWORK IS AN INFORMAL GROUP THAT SHARES INFORMATION REGARDING THREATENED, ENDANGERED AND AT-RISK SPECIES, IDENTIFIES COOPERATIVE OPPORTUNITIES FOR SAMPLING OR PERFORMING ASSESSMENTS, AND PROVIDES INFORMATION REGARDING CURRENT AND UPCOMING REGULATIONS AND LEGISLATION.





It is ONLY in
DARKNESS
that
We can SEE the
STARS

Martin Luther King Jr.

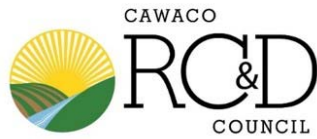


CAWACO RC&D

TREE PLANTING AT EAST LAKE PARK

- VETERANS DAY TREE PLANTING AND CREEK CLEANUP.
- PLANTED NATIVE GROUNDCOVERS AS WELL AS TREES ALONG THE BANK OF VILLAGE CREEK





CAWACO RC&D

ALZHEIMER'S BRACELETS

- THESE BRACELETS EMIT A RADIO TRANSMITTING SIGNAL AND HAVE A 100% SUCCESS RATE IN LOCATING ALZHEIMER'S PATIENTS WHO HAVE WANDERED. PURCHASED 76 BRACELETS FOR AT-RISK PATIENTS IN JEFFERSON COUNTY.





CAWACO RC&D

BACKYARD BLESSINGS

- DISTRIBUTED OVER 26,444 BAGS OF FOOD TO CHILDREN WHO LIVE BELOW THE POVERTY LEVEL, ATTEND TITLE 1 SCHOOLS OR LIVE IN FOOD INSECURE HOMES.



A background image showing various drawing supplies on a light-colored surface. There are several pencils, some sharpened and some not, and a set of black markers. A red heart has been drawn on the surface with one of the markers. The overall tone is artistic and creative.

If you are always trying to be normal,
you will never know how

AMAZING

you can be.



COOSA VALLEY RC&D

CHAMBERS COUNTY CTC TEACHING FARM

- UTILIZING THE HANDS-ON LEARNING APPROACH, STUDENTS BUILT A POLE BARN, INSTALLED FENCING AND BUILT A CHICKEN COOP.





COOSA VALLEY RC&D

GARDENS GROW COMMUNITIES

- THROUGH A PARTNERSHIP WITH CAWACO RC&D, THIS PROGRAM TEACHES THE ABC'S OF GARDENING AND CONVERTED VACANT LOTS INTO PRODUCTIVE GARDENS, PROVIDING FRESH, LOCALLY GROWN PRODUCE, AND INCREASED PHYSICAL ACTIVITY THROUGH GARDENING.



If you can't fly, then **RUN**.
If you can't run, then **WALK**.
If you can't walk, then **CRAWL**.

But whatever you do,

YOU HAVE TO KEEP MOVING.





COOSA VALLEY RC&D

LEADERSHIP ACADEMY

- THE MISSION OF THIS PROGRAM IS TO PROVIDE PRACTICAL AND EDUCATIONAL EXPERIENCES FOR FUTURE LEADERS OF ETOWAH COUNTY.





COOSA VALLEY RC&D

ST. CLAIR GO GREEN!

- THIS OUTDOOR PLAYSPACE IS FILLED WITH EARTH-FRIENDLY FEATURES AND FUN ACTIVITIES TO HELP KIDS LEARN ABOUT RECYCLING, SOLAR POWER, GARDENING AND MORE.

we love our playground!



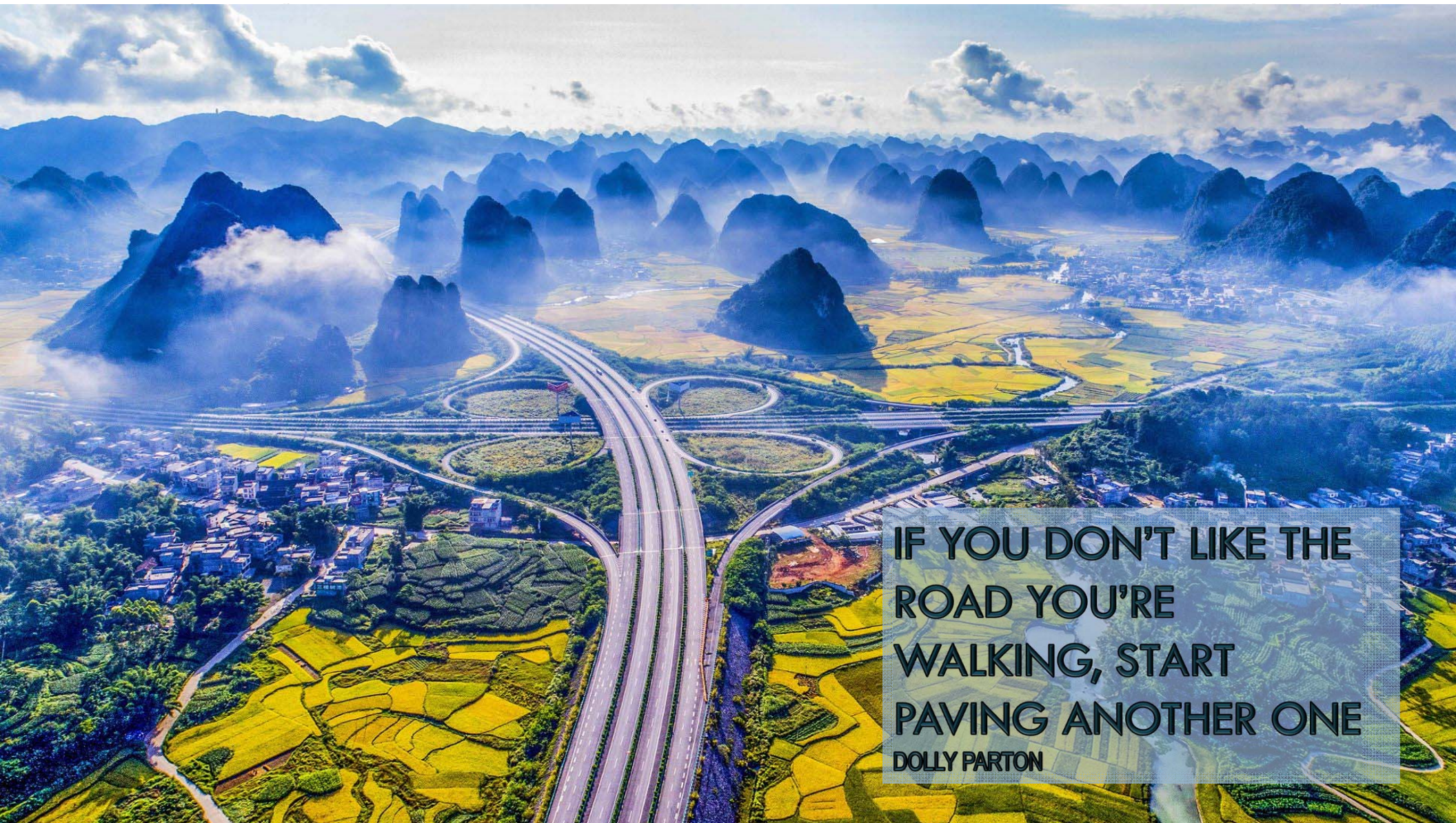


COOSA VALLEY RC&D

EMERGENCY NOTIFICATION EQUIPMENT

- PURCHASED NOAA WEATHER RADIO UNITS FOR DISTRIBUTION THROUGHOUT ST. CLAIR COUNTY COMMUNITIES.





IF YOU DON'T LIKE THE
ROAD YOU'RE
WALKING, START
PAVING ANOTHER ONE
DOLLY PARTON



COOSA VALLEY RC&D

OUTREACH MEETINGS

- OUTREACH MEETINGS WERE HELD IN EACH OF THE 11 COUNTIES, TO INFORM COMMUNITIES ABOUT SERVICES AVAILABLE THROUGH RC&D, NRCS, FSA AND OTHER AGENCIES.





GULF COAST RC&D

BALDWIN COUNTY FARM SAFETY

- THE PROGRESSIVE AGRICULTURE SAFETY DAY OFFERED MANY SAFETY ACTIVITY STATIONS TO TEACH STUDENTS ELECTRICAL, SUN, WEATHER, FIRE, ANIMAL, TRACTOR, 911 & 811 SAFETY LESSONS.





GULF COAST RC&D

BALDWIN, ESCAMBIA & MOBILE COUNTY WATER FESTIVALS

- STUDENTS LEARN THE IMPORTANCE OF WATER CONSERVATION DURING THE ONE-DAY EVENT AND MINI-FESTIVALS.



BE THE CHANGE

you want to see

IN THE WORLD.

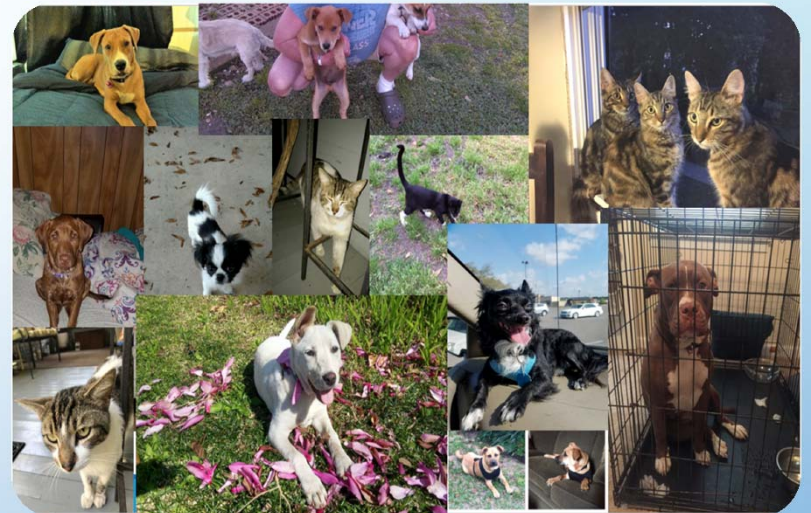




GULF COAST RC&D

SOUTH MOBILE SPAY/NEUTER

- A PROGRAM OFFERED TO LOW-INCOME RESIDENTS TO SPAY AND NEUTER CATS AND DOGS IN ORDER TO DECREASE THE POPULATION OF UNWANTED ANIMALS AND PROTECT WILDLIFE.





GULF COAST RC&D

GIRL SCOUT CAMP

- PROVIDE CAMP SCHOLARSHIPS AND FINANCIAL ASSISTANCE TO LOW-INCOME CAMPERS THROUGHOUT THE GULF COAST RC&D AREA





GULF COAST RC&D

ATMORE ROTARY SPLASH PAD

- THE ATMORE ROTARY PARTNERED WITH OTHER COMMUNITY GROUPS TO BUILD A SPLASH PAD IN ATMORE TO PROVIDE A SAFE AREA FOR CHILDREN.



A GOAL is a
DREAM
With a
DEADLINE

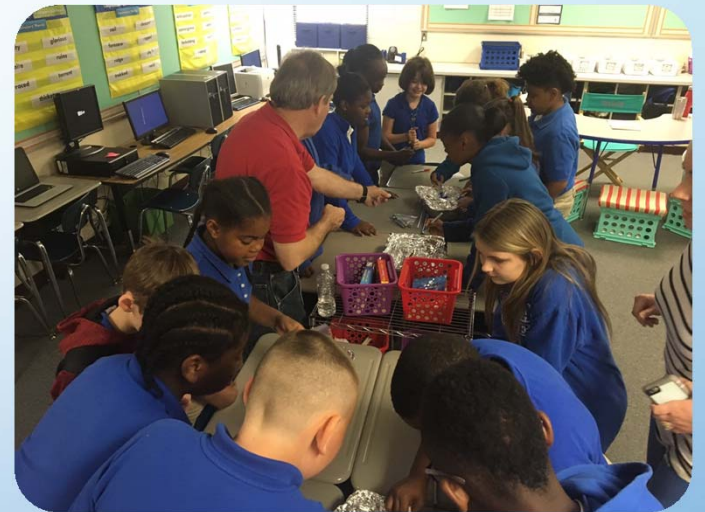




GULF COAST RC&D

USA CENTER CITRUS GREENING

- CHEMISTRY TEACHERS AND STUDENTS RECEIVE PROFESSIONAL TRAINING IN HIGH TECH LABORATORY EXPERIENCES.





GULF COAST RC&D

19TH ANNUAL CATFISH ROUNDUP

- A DAY FISHING, FUN & GAMES FOCUSING ON SERVING THE ELDERLY AND THOSE WITH DISABILITIES.





MID-SOUTH RC&D

ELMORE COUNTY AGRICULTURE AND CAREER DAYS

- THE FOURTH-GRADE CLASSES OF TWO ELMORE COUNTY SCHOOLS SPENT A DAY ON THE FARM, LEARNING ALL ABOUT THE WIDE WORLD OF AGRICULTURE, AND THE PLETHORA OF CAREERS IT OFFERS AT THE ELMORE COUNTY AG DAY.



THOSE WHO DON'T BELIEVE
IN MAGIC



WILL NEVER FIND IT

ROALD DAHL



MID-SOUTH RC&D

FISHING FOR FAMILIES

- GRANT AWARDS USED TO STOCK POND AS WELL AS SITE ENHANCEMENT FOR GENERAL PUBLIC USE.





MID-SOUTH RC&D

ALABAMA BIRDING TRAILS EDUCATION & OUTREACH

- DESIGN AND INSTALLATION OF ALABAMA BIRDING TRAIL SIGNAGE AS WELL AS DEVELOPMENT OF CURRICULUM FOR TEACHER WORKSHOPS HELD AT THE ALABAMA NATURE CENTER IN MILLBROOK.





MID-SOUTH RC&D

LEARNING THROUGH LANARK

- AUTAUGAVILLE SCHOOL FIELD TRIP TO THE ALABAMA NATURE CENTER ACTIVELY ENGAGED STUDENTS IN AN OUTDOOR LEARNING ENVIRONMENT.



LEADERS
Don't
create
followers

They
Create
more
LEADERS





MID-SOUTH RC&D

YOUTH SUMMER CONSERVATION PROGRAM

- DEVELOPED OUTDOOR CLASSROOM, INCLUDING PORTABLE RESTROOMS, WILDLIFE CLASSES AND STOCK PONDS FOR FISHING.





MID-SOUTH RC&D

CHILDREN AND MENTORS OUTDOORS

- PURCHASE ENCLOSED CARGO TRAILER AND SUPPLIES TO SAFELY STORE-TRANSPORT EDUCATIONAL AND OUTDOOR SUPPLIES.





MID-SOUTH RC&D

TULOTOMA SNAIL TRAIL MURAL

- FUNDS WERE USED TO PAINT MURALS FOR DOWNTOWN MAIN STREET WETUMPKA ALABAMA



*It is done unto you as
you believe.*

~ Jesus





NORTHWEST RC&D

ELECTRICAL SAFETY TRAINING

- MEMBERS OF THE ALABAMA RETIREES TECHNICAL ADVISORY GROUP VISITED SEVENTEEN SCHOOLS (K-12) TO TEACH STUDENTS SAFE ELECTRICAL PRACTICES, CHECK BUILDINGS FOR HOT CIRCUITS AND CODE-REQUIRED WIRING AND MAKE RECOMMENDATIONS TO SCHOOL ADMINISTRATION.





NORTHWEST RC&D

FARM CITY TOURS

- FUNDS WERE USED TO ASSIST WITH PROVIDING THE COST OF NINE BUSES FOR THE FARM TOUR THAT WAS HELD IN CONJUNCTION WITH ALFA'S FARM CITY WEEK.



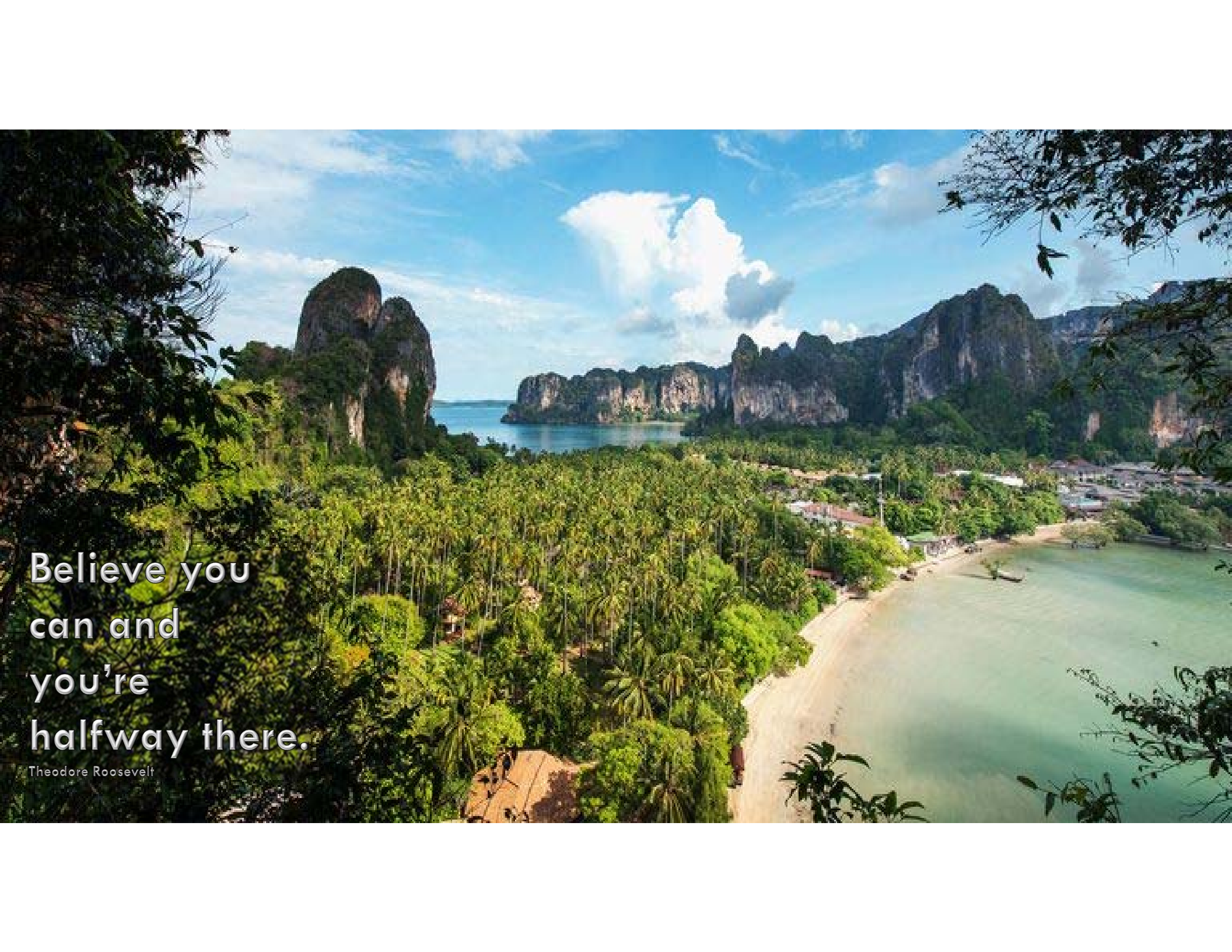


NORTHWEST RC&D

NORTHWEST ALABAMA LAMB JAM

- FUNDS WERE USED FOR THE WC HANDY MUSIC EVENT, THAT NW RC&D USED TO PROMOTE LOCALLY RAISED LAMB, PREPARED BY A LOCAL CHEF.





Believe you
can and
you're
halfway there.

Theodore Roosevelt



NORTHWEST RC&D

MARION COUNTY RIVER KIDS

- PURCHASED AN ENCLOSED TRAILER TO HOUSE MARION COUNTY 4-H RIVER KIDS KAYAKS, PADDLES, PFD'S, EDUCATIONAL SUPPLIES AND SAFETY EQUIPMENT.

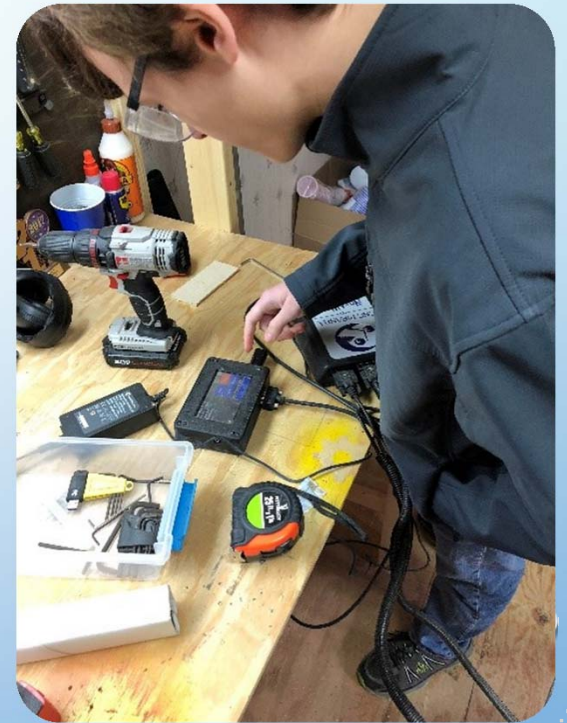




NORTHWEST RC&D

PHILLIPS HIGH SCHOOL ROBOTICS

- PROVIDED FUNDS TO HELP GROW THE ROBOTICS PROGRAM AT PHILLIPS HIGH SCHOOL





NORTHWEST RC&D

BROOKS HIGH SCHOOL LOCKERROOM UPGRADES

- PROVIDED FUNDS TO UPDATE MEN AND WOMEN'S LOCKER ROOMS AT BROOKS HIGH SCHOOL.



PROBLEMS
cannot be
SOLVED
by the same
MIND SET
that created
them

Albert Einstein





NORTHWEST RC&D

CANCER AWARENESS FIRE TRUCK

- SPONSORED PINK CANCER-AWARENESS FIRE TRUCK TO BRING AWARENESS TO BREAST CANCER AND RESEARCH.

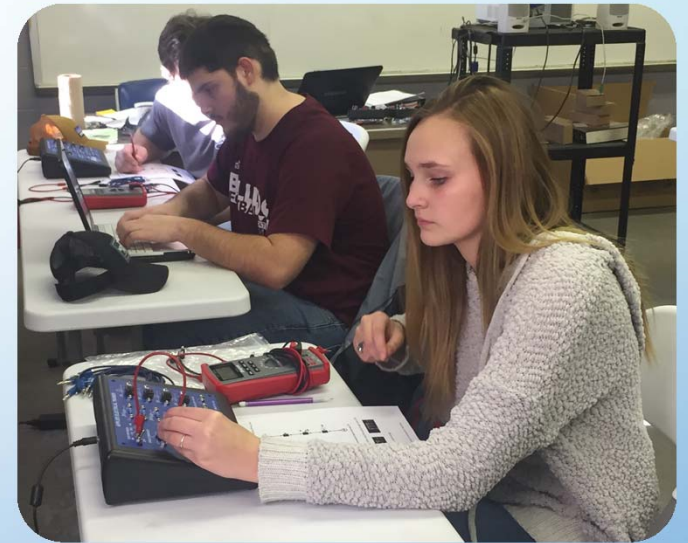




TOMBIGBEE RC&D

AUTOMOTIVE CLASS

- LAMAR COUNTY SCHOOL OF TECHNOLOGY PURCHASED UPDATED SIMULATORS AND EQUIPMENT TO BETTER TRAIN HIGH SCHOOL STUDENTS FOR TODAY'S AUTOMOTIVE REPAIRS.





TOMBIGBEE RC&D

BUHL ELEMENTARY SCHOOL PROJECT

- TURNED A ROCKY HILLSIDE INTO A GRASSY AREA FOR STUDENTS TO ENJOY FOR SPORTING ACTIVITIES



A photograph of a large, ancient tree with thick, gnarled roots growing over and around a stone building. The building has multiple doorways and is covered in moss and vines. The scene is set in a lush, green environment with other trees in the background.

SUCCESS is the SUM
of small efforts-

REPEATED
day in and day out



TOMBIGBEE RC&D

LIVING RIVER: A RETREAT ON THE CAHABA

- REPLACED AN UNSAFE, CORRODING CANOE RAMP WITH A SAFER VERSION, PROVIDING STABLE EASE OF PUBLIC ACCESS WHILE MAINTAINING A LIGHT ENVIRONMENTAL FOOTPRINT.





TOMBIGBEE RC&D

KENNEDY HIGH SCHOOL MEMORIAL

- A MEMORIAL SCHOOL MONUMENT WAS ERECTED AT KENNEDY HIGH SCHOOL, WHICH WAS DESTROYED BY FIRE IN 1983





TOMBIGBEE RC&D

PLAYGROUND SAFETY EQUIPMENT

- UWA CHARTER SCHOOL PURCHASED FENCING TO ENCLOSE THE PLAYGROUND AREA FOR THE NEWLY CREATED UNIVERSITY CHARTER SCHOOL.





It always seems
IMPOSSIBLE
until it is done

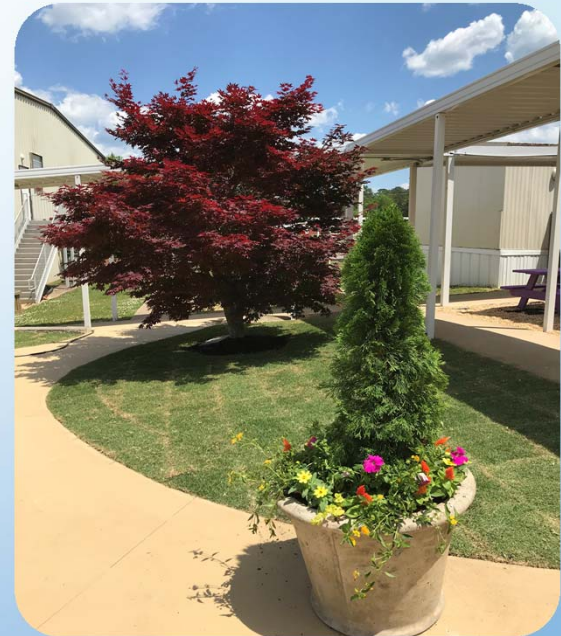
Nelson Mandela



TOMBIGBEE RC&D

WALKER ELEMENTARY SCHOOL

- ADDED LANDSCAPING AND SIDEWALKS TO A ROCK GRAVEL COURTYARD, CREATING AN ATTRACTIVE AREA AT THE ENTRANCE OF THE SCHOOL.





TOMBIGBEE RC&D

TREASURED FOREST TOUR

- SPONSOR FORUMS AND TOUR ALABAMA TREASURE FOREST IN FLORENCE, ALABAMA IN ORDER TO ASSIST LANDOWNERS IN LEARNING PROPER CARE OF THEIR FOREST RESOURCES.





WIREGRASS RC&D

COFFEE COUNTY GROUNDWATER FESTIVAL

- CONDUCTED EDUCATIONAL ACTIVITIES FOCUSING ON WATER CONSERVATION TO ALL 4TH GRADERS IN COFFEE COUNTY SCHOOLS.



*Wherever life plants you,
Bloom with grace*





WIREGRASS RC&D

GROUNDWATER FESTIVAL

- CONDUCTED EDUCATIONAL ACTIVITIES FOCUSING ON WATER CONSERVATION TO ALL 4TH GRADERS IN COFFEE COUNTY SCHOOLS.





WIREGRASS RC&D

IPADS FOR STUDENT ENGAGEMENT

- PURCHASED 50 IPADS TO BE USED FOR THE K-5, AS WELL AS GENERAL AND SPECIAL NEEDS CLASSROOMS.



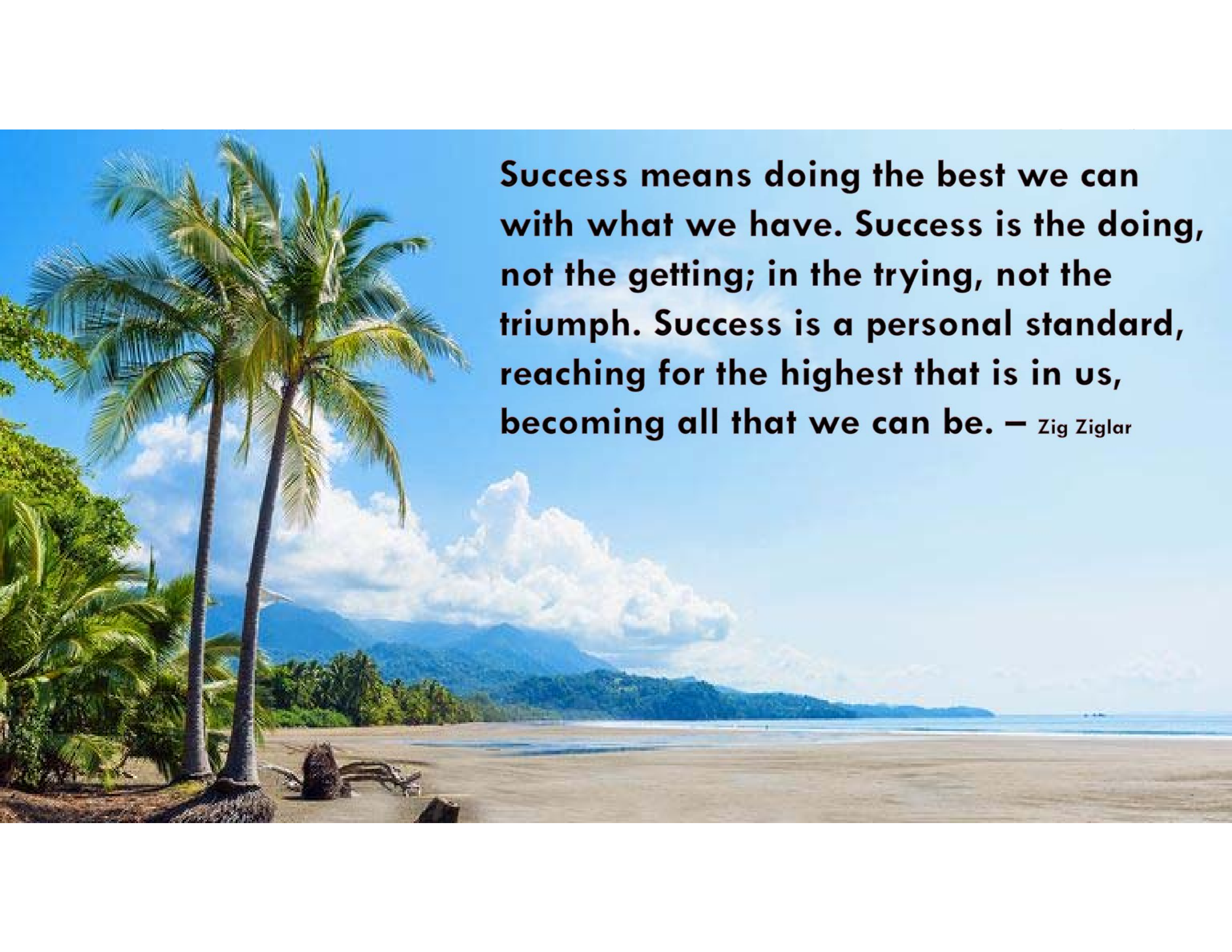


WIREGRASS RC&D

SUPER CITIZEN PROGRAM

- A 10-WEEK PROGRAM DESIGNED TO TEACH, INSPIRE AND EMPOWER ELEMENTARY STUDENTS TO A DEEPER UNDERSTANDING THROUGH APPLIED PRACTICE, OF THEIR IMPORTANT ROLE AS CITIZENS.





Success means doing the best we can with what we have. Success is the doing, not the getting; in the trying, not the triumph. Success is a personal standard, reaching for the highest that is in us, becoming all that we can be. — Zig Ziglar



WIREGRASS RC&D

ASHFORD HIGH SCHOOL BAND UNIFORMS

- THE ASHFORD HIGH SCHOOL BAND RECEIVED A GRANT TO REPLACE 15 YEAR-OLD UNIFORMS FOR THE BAND OF 80-100 STUDENTS.





WIREGRASS RC&D

SLOCUMB FIRE RESCUE TRAINING TOWER

- SLOCUMB FIRE & RESCUE BUILT A FIRE DEPARTMENT DRILL TRAINING TOWER. THIS TOWER ALLOWS FIREFIGHTERS IN GENEVA COUNTY THE OPPORTUNITY FOR HANDS-ON FIRE RESCUE TRAINING.





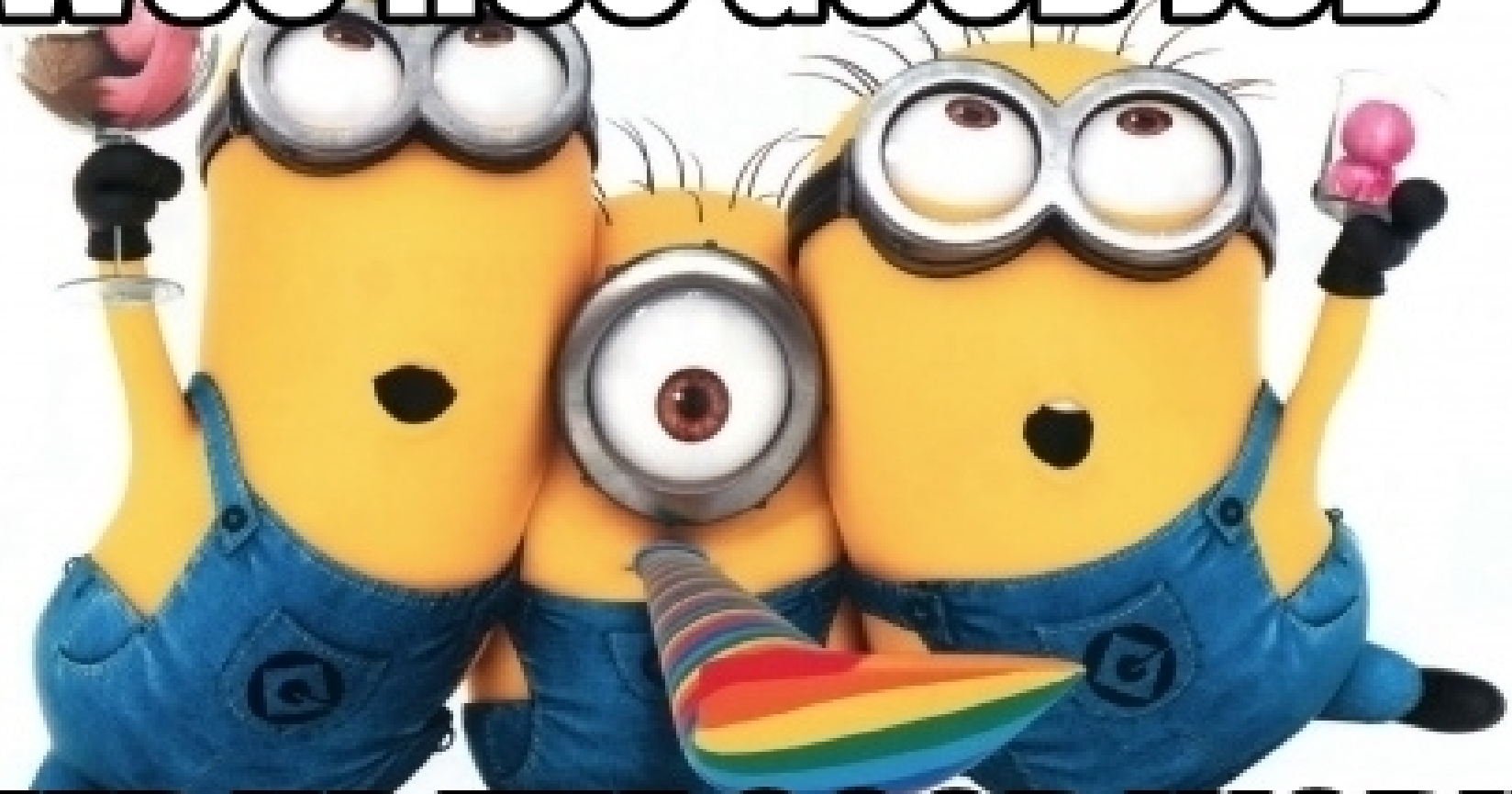
WIREGRASS RC&D

HOUSTON COUNTY FFA

- PURCHASE MATERIALS IN SUPPORT OF COTTONWOOD FUTURE FARMERS OF AMERICA



WOO HOO GOOD JOB



KEEP UP THE GOOD WORK



CORPORATE CAT

**THINKS YOU'RE
AWESOME**

quickmeme.com