

Jasper Stream Restoration

Construction May 21-29, 2008



Town Creek



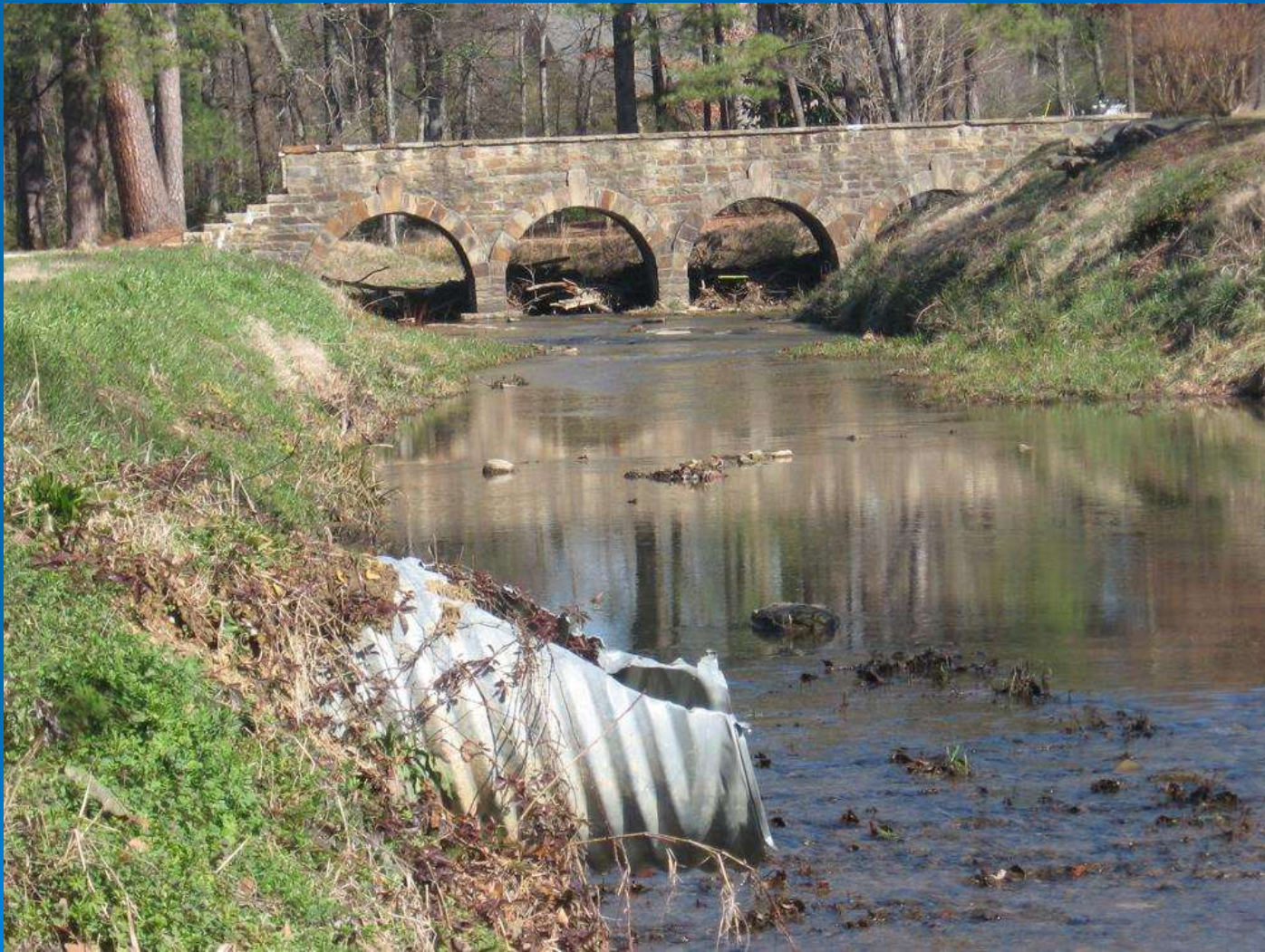
Before Restoration



After Restoration



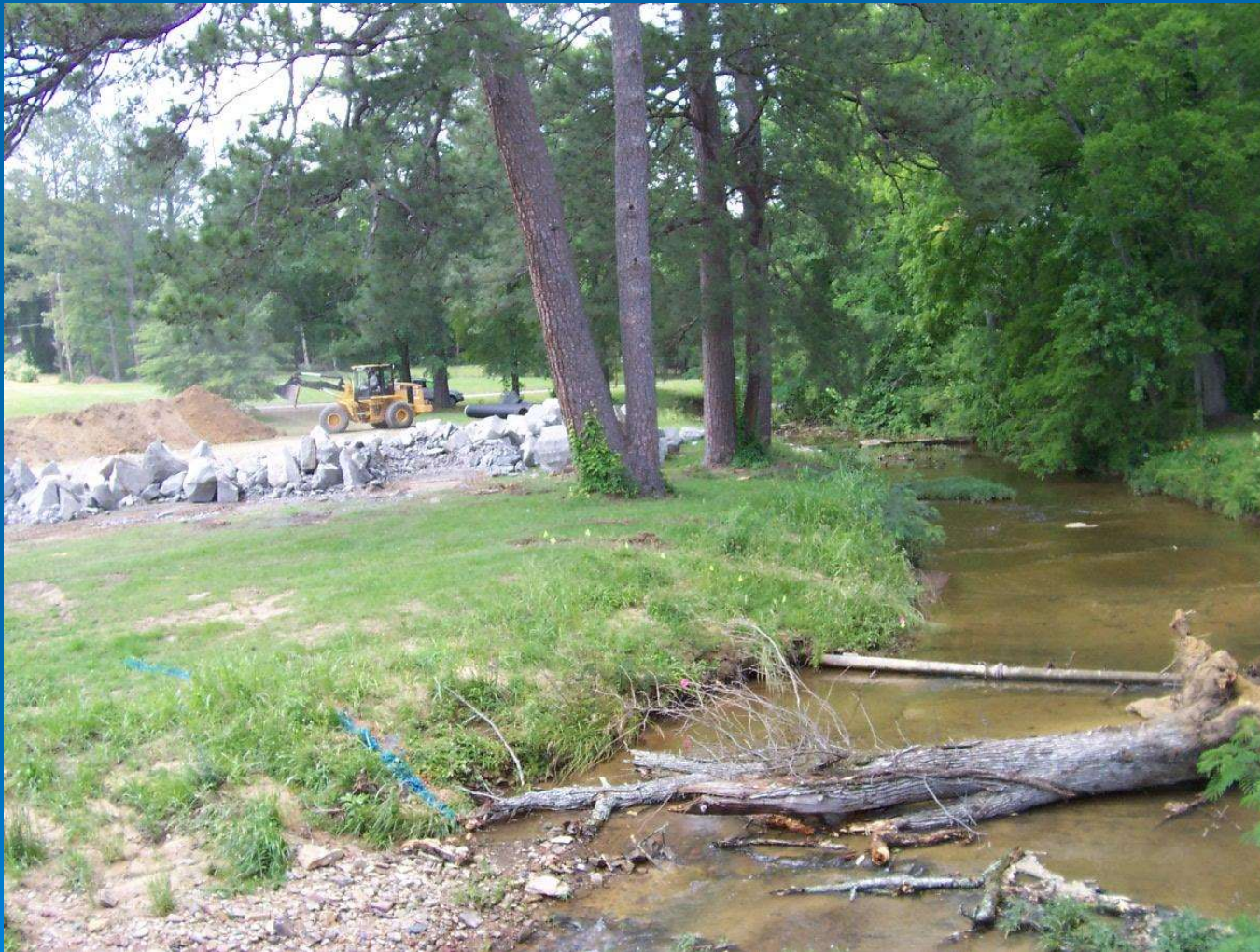
Before



After



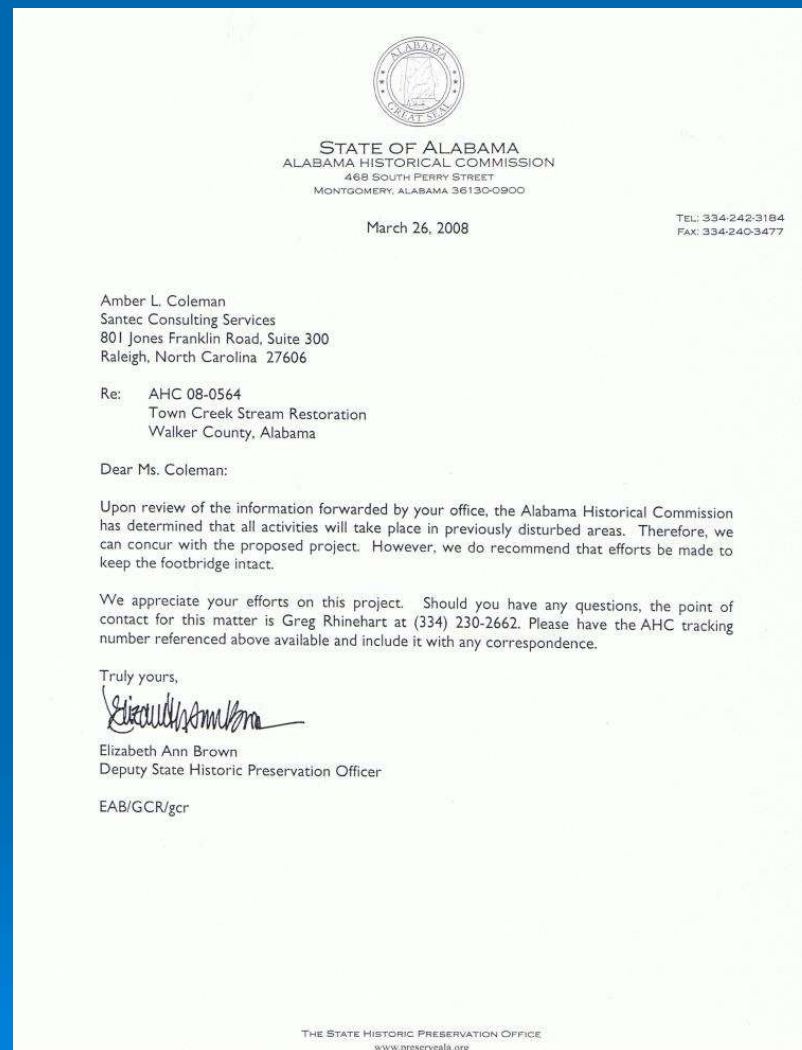
Before



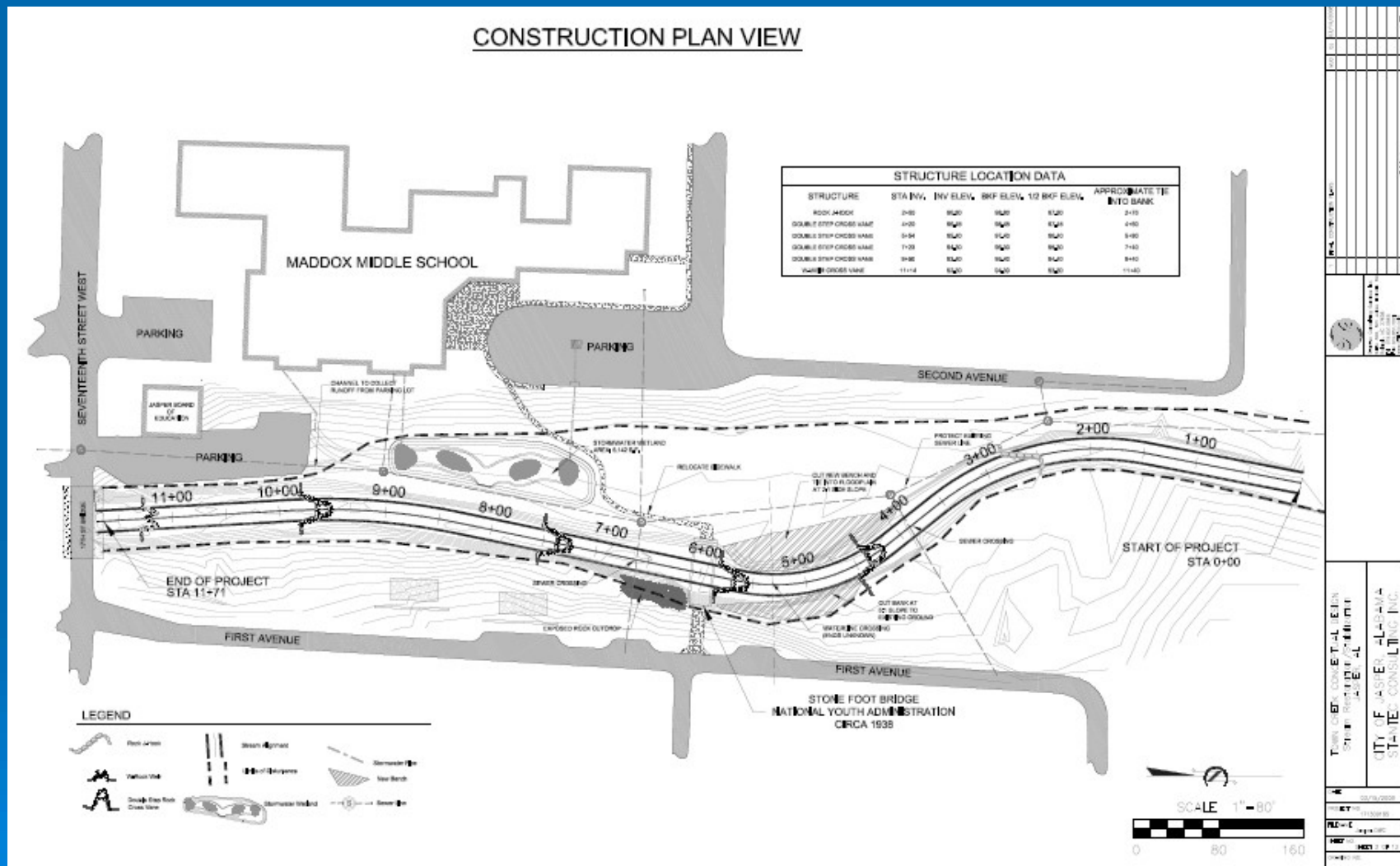
After



Step One-Permits



Stream Construction Design



Preliminary Wetland Design



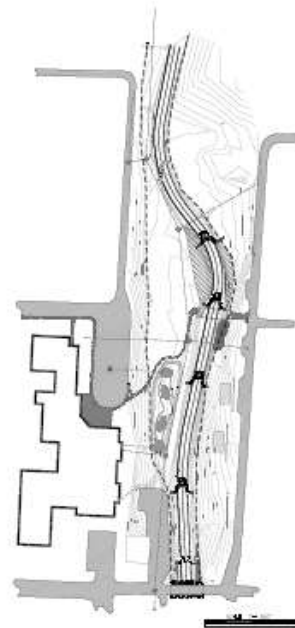
NOTES:
THE SITE IS LOCATED OFF 1ST AVENUE EAST BETWEEN THE LIMITS OF 17TH STREET WEST AND 14TH STREET WEST IN THE CITY OF JASPER, ALABAMA. THE SITE IS BORDERED TO THE SOUTH BY THE 17TH STREET BRIDGE AND TO THE NORTH BY 14TH STREET. THE TOTAL PROJECT LENGTH IS APPROXIMATELY 1,100 LINEAR FEET OF STREAM ENHANCEMENT AND APPROXIMATELY 0.14 ACRES OF STORMWATER WETLAND ENHANCEMENT.

PROJECT PARTNERS INCLUDE: CITY OF JASPER, BLACK WARRIOR CLEAN WATER PARTNERSHIP, ALABAMA COOPERATIVE EXTENSION SYSTEM, NORTH CAROLINA STATE UNIVERSITY, USDA-CREES, USDA-NRCS, NORTH STATE ENVIRONMENTAL, WALKER COUNTY SOIL & WATER CONSERVATION DISTRICT, CAWACO RESOURCE CONSERVATION & DEVELOPMENT COUNCIL INC, AND STANTEC INC.

TOWN CREEK STREAM RESTORATION STORMWATER WETLAND RETROFIT

FINAL CONSTRUCTION PLANS

CITY OF JASPER, ALABAMA



SHEETS:

1. COVER SHEET
2. CONSTRUCTION PLAN VIEW
3. CONSTRUCTION DETAIL
4. CONSTRUCTION DETAIL 2
5. STRUCTURE DETAIL - CROSS VANE
6. STRUCTURE DETAIL - ROCK J-HOOK
7. STRUCTURE DETAIL - W-WEIR
8. STORMWATER WETLAND DETAIL
9. SEDIMENT & EROSION CONTROL PLAN VIEW
10. EROSION DETAIL - SILT FENCE
11. EROSION DETAIL - COIR MATTING
12. PLANTING PLAN VIEW
13. PLANTING DETAILS

[illegible]

The Process



800 TONS OF ROCK- 5/21/2008

Equipment



May 24, 2008

Construction



CREATING A FLOODPLAIN- 5/24/2008

Cross Vane



Staking Matting



May 24, 2008

Creating Stormwater Wetland



May 24, 2008

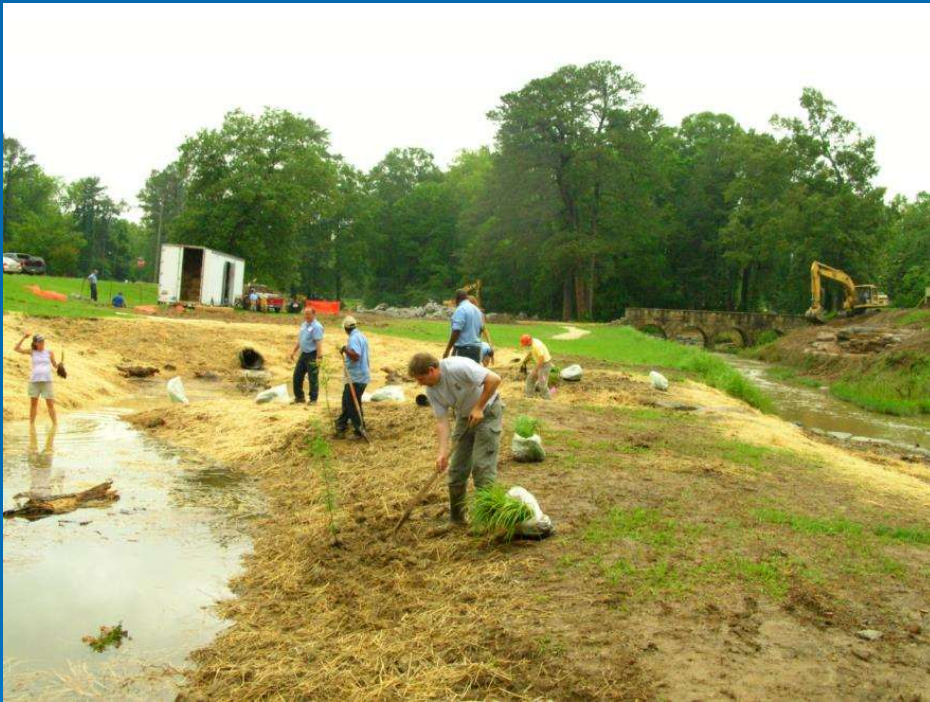
Items to be Utilized



Wetland Progress



Wetland Planting



May 28, 2008



Stream Construction Workshop



May 29, 2008

Outdoor Class



5/29/2008



Structures



Double-Wing Deflector

Double Step Offset Cross Vane



Log Vane with J-hook



W-Weir Cross Vane



Before



After



Before



After

